



GAT MONTHLY MEMBERSHIP PROGRESS REPORT

Results as of: 8/31/2021

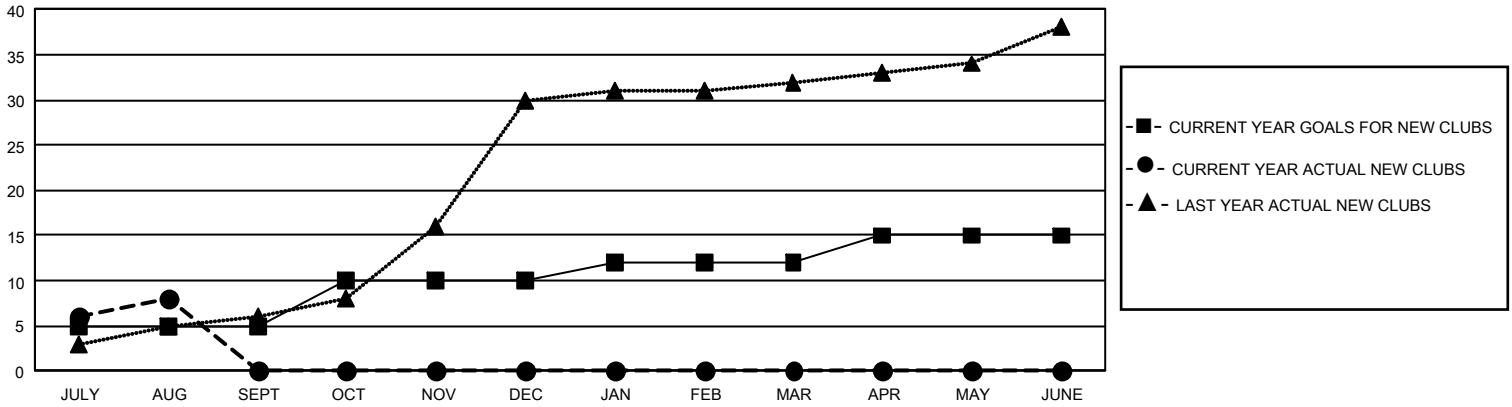
GMT Constitutional Area 6, Group L

REPORT DOES NOT INCLUDE CLUBS IN UNDISTRICTED AREAS.

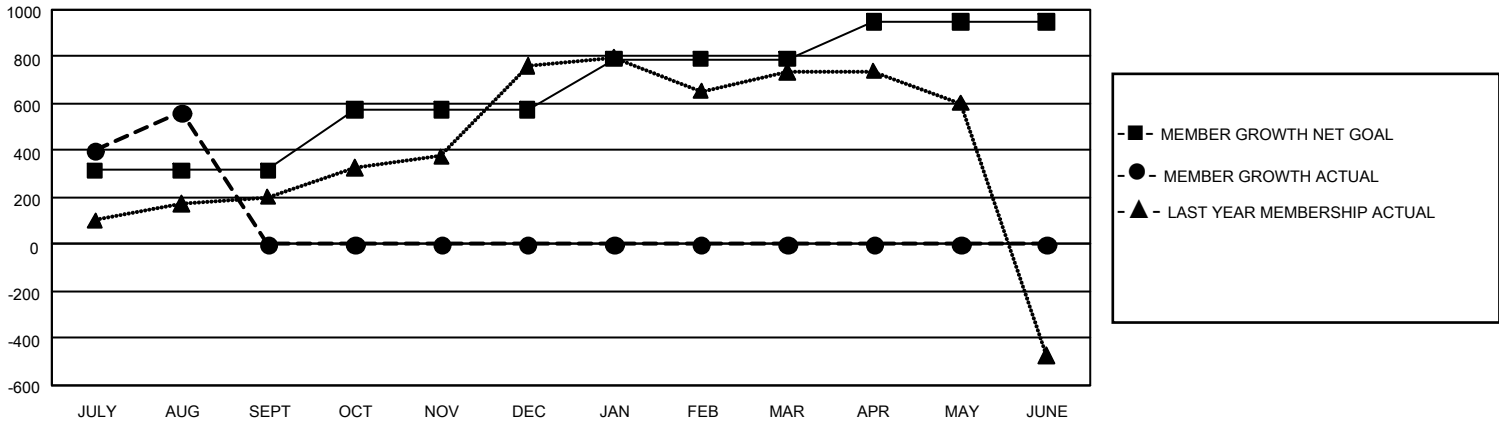
Clubs			
RESULTS FOR 2021-2022			
QUARTER	NEW CLUB GOAL	NEW CLUBS	DROPPED CLUBS
JULY/AUG/SEPT	15	8	4
OCT/NOV/DEC	15	0	0
JAN/FEB/MAR	6	0	0
APR/MAY/JUNE	9	0	0

Members			
RESULTS FOR 2021-2022			
QUARTER	MEMBER GROWTH NET GOAL	MEMBER GROWTH ACTUAL	DROPPED MEMBERS ACTUAL (including transfers)
JULY/AUG/SEPT	315	783	164
OCT/NOV/DEC	260	0	0
JAN/FEB/MAR	215	0	0
APR/MAY/JUNE	160	0	0

GOALS AND ACTUAL NEW CLUBS CUMULATIVE



GOALS AND ACTUAL MEMBERS CUMULATIVE



DROPPED CLUBS: 4	104 CLUBS OF 310 ADDED 1 OR MORE NEW MEMBERS	<u>GENDER DISTRIBUTION</u>	
		MALE 7,454 (61.80%) FEMALE 4,607 (38.20%) NON BINARY 0 (0.00%) PREFER NOT TO ANSWER 0 (0.00%)	
<u>DROPPED MEMBERS</u>		CLICK HERE FOR CUMULATIVE MEMBERSHIP DATA	TOTAL FAMILY UNIT MEMBERS 6,973
DECEASED 8 CLUB CANCELLED 63 OTHER 93 TOTAL 164			FAMILY MEMBERS PAYING HALF DUES 3,906